

Switch on/off Christmas lighting wirelessly and automatically, for example at sunset and sunrise



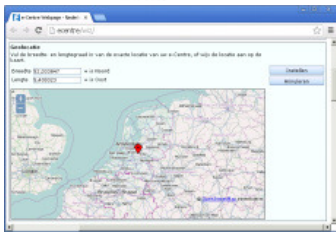
Use e-Domotica to switch Christmas lighting at home and Christmas lighting in your garden automatically at or around sunset. For example a Christmas tree inside your home, a Christmas tree in your garden, Christmas rope lights, a Christmas star or other Christmas decorations. This also saves you money because no energy is wasted during daytime.

Follow these instructions to enable this solution at your home

1. Access your e-Centre base station and setup your location

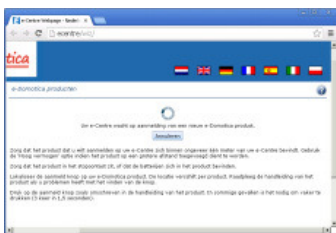


- Start your computer or laptop.
- Open a browser, for example Chrome or Firefox.
- Open the web page of your e-Centre using <http://ecentre>. Or use the IP address of your e-Centre, for example: <http://192.168.1.100> if this is the IP address your e-Centre has received from your home network.
- Log in using the default PIN code 1234, or your own PIN code.



- Click 'Settings' at the bottom of the page.
- Go to 'Geolocation'.
- Click 'Set', a map of the Netherlands is shown,.
- Choose your location by clicking one time on the map, Double click to zoom or use the + and – buttons.
- Check 'Set' again to set and save the location.

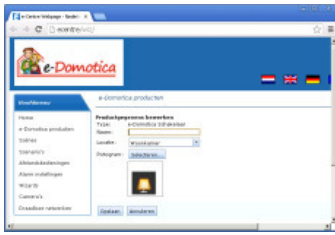
2. Add a new product to your e-Centre base station



- Go to the 'e-Domotica products' page.
- Click 'Include'.
- Your e-Centre will enter inclusion mode to check for new devices.



- Press the button of the switch one time to include it.
- The webpage of your e-Centre will tell you if the product is found or not.



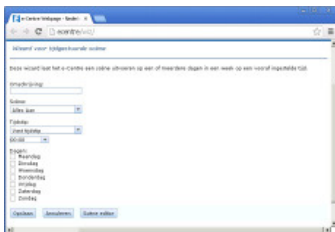
- Provide a name for the light or device.
- Select a location from the list, for example 'Living room'.
- Select an image to your desire.
- Click 'Save' to store the settings.

3. Add scenes to switch lighting on and off



- Click 'Scenes' in the menu on the left hand side.
- Click 'Add'.
- Provide a name, for example 'Christmas lights on'.
- If you wish you can select 'Display a button for this scene on the home screen of your e-Centre'. Provide a text and select an image for this scene.
- Click 'Add'.
- Select the device included earlier at 'Device'.
- Select 'Switch' at 'Feature', select 'Assign to' at 'Action' and select 'On' at 'Value'.
- Click 'Save'.
- Add more devices to this scene if you want to.
- Click 'Save' to save the scene.
- Create another scene, using the same instruction but now to switch of the devices. Select 'Off' at 'Value' for this scene.

4. Add a time triggered scene



- Click 'Wizards' in the menu on the left hand side.
- Click 'Add'.
- Click 'Choose' at 'Time triggered scene'.
- Provide a description, for example 'Switch on christmas lights at sunset'.
- Choose a scene you added earlier.
- Choose 'Minutes after sunset' or 'Minutes before sunset' at 'Time'.
- Enter a number of minutes.
- Choose one or more days to execute this scene automatically.
- Click 'Save'.
- Create another time triggered scene using the same steps, but now to switch off the lights. You can setup a preset time, for example 23:45h or 'Minutes before sunrise' or 'Minutes after sunrise'.
- The lights are switched on and off automatically using these settings.